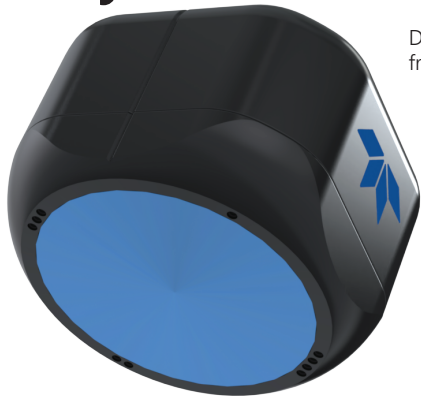


# Wayfinder DVL Getting Started

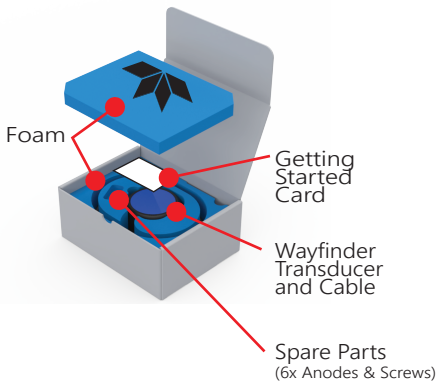


Download the Wayfinder DVL Guide and software from here:

<https://teledynnerdi.myshopify.com/#Documentation>



## What's in the box?



## Wayfinder DVL Care

- Never set the Wayfinder on a hard or rough surface. This may leave an indentation in the urethane, damage the urethane face, or scratch the anodized finish.
- Do not expose the Wayfinder to prolonged sunlight (24 hours or more). The urethane face may develop cracks. Cover the Wayfinder if it will be exposed to sunlight.
- Do not store the Wayfinder in temperatures over 60 degrees C or under -25 degrees C. The internal components and/or urethane face may be damaged.
- Do not connect other metal to the Wayfinder. Other metals may cause corrosion damage. Isolating bushings must be used when mounting the Wayfinder to a metal structure.